

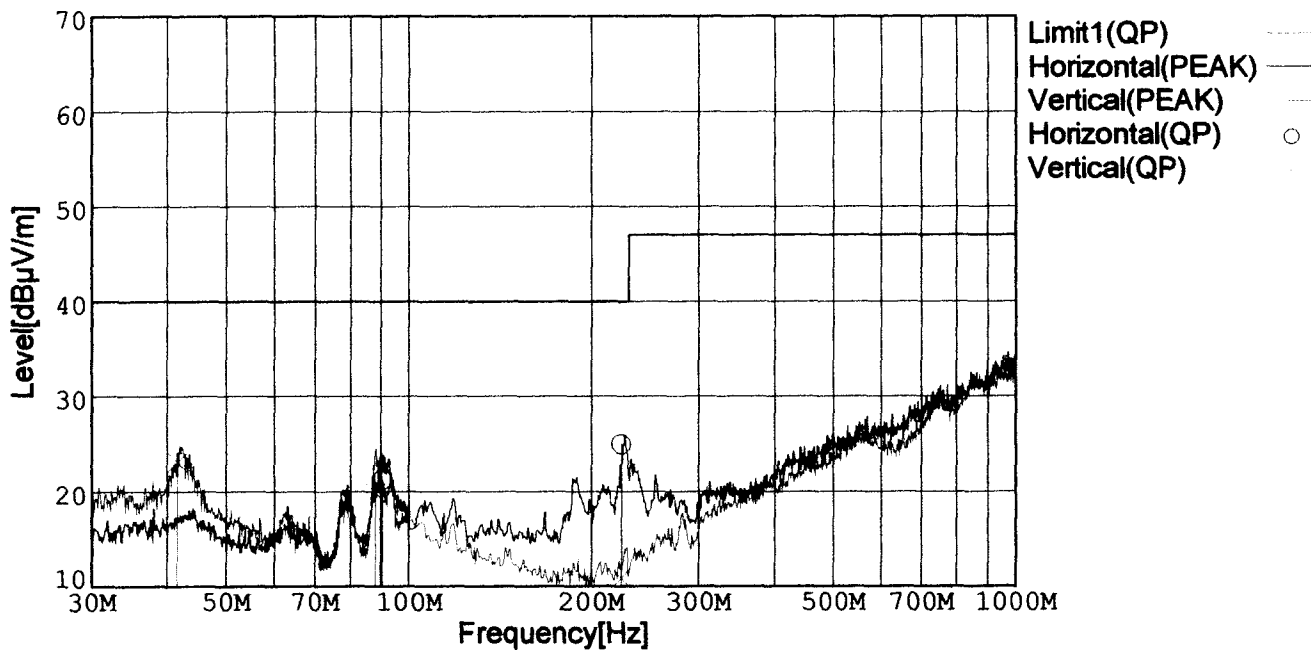


**RADIATED EMISSION**

Model Name : DBS400B03  
 Model No. :  
 Serial No. :  
 Detector : PEAK/QP  
 Points : 4  
 Polarization : Hori. & Vert.

Temperature : 25deg C  
 Humidity : 45%  
 Comment : Vin=AC230V,Io=100%  
 Date : 2000/7/20 10:57  
 EMI Receiver(s) : R3261A,ESPC

Limit1: [EN 55022] Class B<3m>



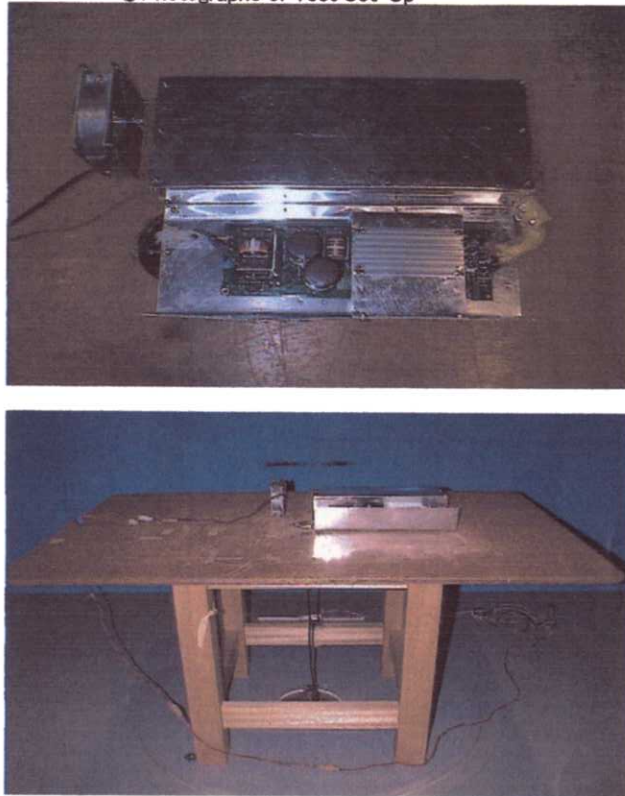
Frequency [MHz]	Meter Reading [dBµV]	Antenna Factor[dB]	Cable Loss[dB]	Level [dBµV/m]	Angle[°]	Height [cm]	Pola.	Limit [dBµV/m]	Margin [dB]
223.545	40.3	-27.4	12.1	25.0	126	119	Hori.	40.0	15.0
90.363	38.4	-28.2	11.0	21.2	9	141	Hori.	40.0	18.8
41.519	36.9	-28.7	14.9	23.1	183	125	Vert.	40.0	16.9

Conditions

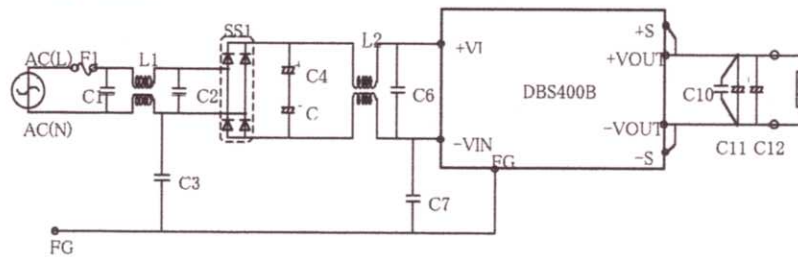
Date 2000/8/11

Test : RADIATED EMISSION  
 Model Name : DBS400B

○Photographs of Test Set-Up



○Testing circuitry



- F1 : CES15 (SOC:15A 250V)
- C1、C2 : CFJC22E474M (NITSUKO:0.47  $\mu$ F 250V)
- C6 : CFJC22E224M (NITSUKO:0.22  $\mu$ F 250V)
- C4、C5 : LGQ2E102M (NICHICON:1000  $\mu$ F 250V)
- C3、C7 : DE1207-2E332M-KH (MURATA:3300pF 250V)
- L1 : SC-05-20J (TOKIN:2.0mH min 5.0A)
- L2 : SS28H-25045 (TOKIN:4.5mH min 2.5A)
- SS1 : D25XB60 (SINDENGEN:25A 600V)
- C10 : MDD21H104M5 (NITSUKO:0.1  $\mu$ F 50V)
- C11、C12 : Table 1(NIPPON CHEMI-CON)

Table 1

MODEL	C11	C12
DBS400B03	LZX10VB3300MK25	LZX10VB3300MK25
DBS400B05, 07	LZX10VB2200MK20	LZX10VB2200MK20
DBS400B12	LZX25VB1000MK20	LZX25VB1000MK20
DBS400B15, 18	LZX35VB1000MK25	LZX35VB1000MK25
DBS400B24, 28	LZY50VB820MK40	-

Fig 1. Testing circuitry

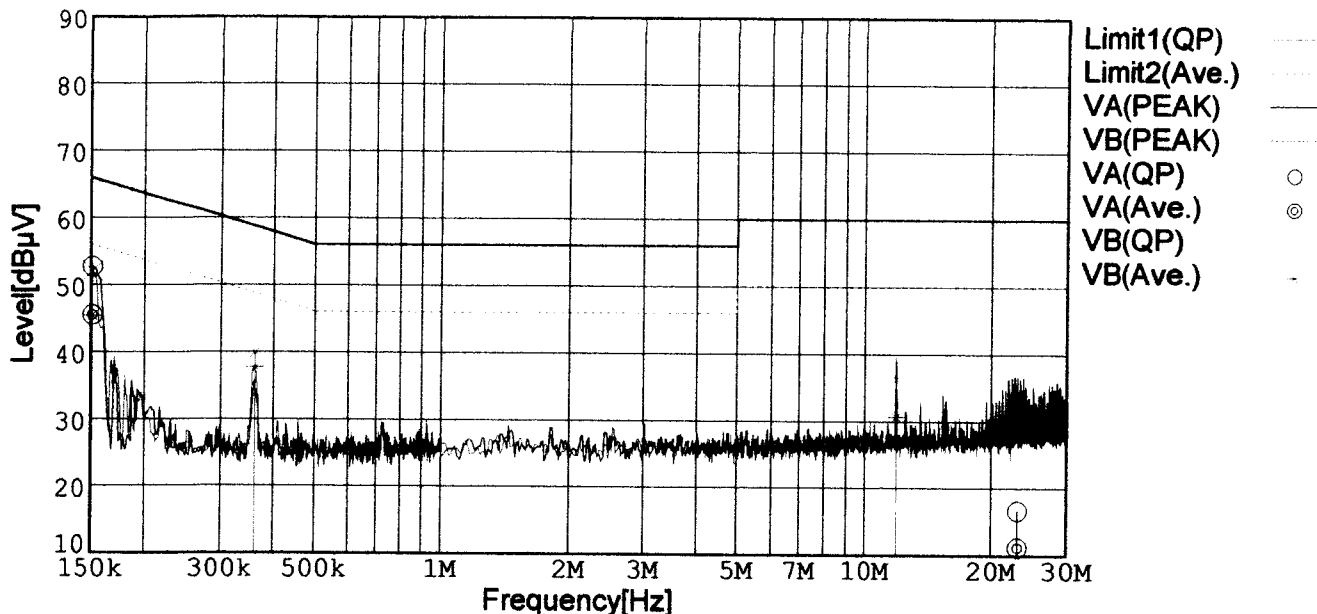


LINE CONDUCTION

Model Name : DBS400B03  
 Model No. :  
 Serial No. :  
 Detector : PEAK/QP/Ave.  
 Points : 4  
 Line Mode : VA/VB

Temperature : 25deg C  
 Humidity : 45%  
 Comment : Vin=AC230V,Io=100%  
 Date : 2000/7/20 11:37  
 EMI Receiver(s) : R3261A,ESPC

Limit1: [EN 55022] Class B(QP)  
 Limit2: [EN 55022] Class B(Ave.)



Frequency [MHz]	Meter Reading (QP) [dBµV]	Meter Reading (Ave.) [dBµV]	Factor [dB]	Level (QP) [dBµV]	Level (Ave.) [dBµV]	Line	Limit (QP) [dBµV]	Limit (Ave.) [dBµV]	Margin (QP)[dB]	Margin (Ave.) [dB]
0.1509	42.4	35.1	10.3	52.7	45.4	VA	65.9	55.9	13.2	10.5
0.1509	41.7	35.1	10.3	52.0	45.4	VB	65.9	55.9	13.9	10.5
0.3608	29.6	27.3	10.3	39.9	37.6	VB	58.7	48.7	18.8	11.1
11.8373	25.8	20.2	10.5	36.3	30.7	VB	60.0	50.0	23.7	19.3

Conditions

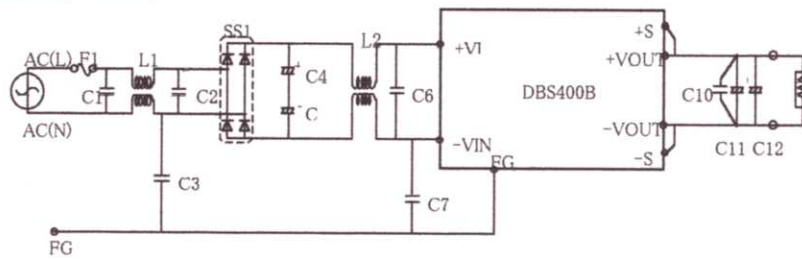
Date 2000/8/11

Test : LINE CONDUCTION  
 Model Name : DBS400B

○Photographs of Test Set-Up



○Testing circuitry



- F1 : CES15 (SOC:15A 250V)
- C1、C2 : CFJC22E474M (NITSUKO:0.47 μ F 250V)
- C6 : CFJC22E224M (NITSUKO:0.22 μ F 250V)
- C4、C5 : LGQ2E102M (NICHICON:1000 μ F 250V)
- C3、C7 : DE1207-2E332M-KH (MURATA:3300pF 250V)
- L1 : SC-05-20J (TOKIN:2.0mH min 5.0A)
- L2 : SS28H-25045 (TOKIN:4.5mH min 2.5A)
- SS1 : D25XB60 (SINDENGEN:25A 600V)
- C10 : MDD21H104M5 (NITSUKO:0.1 μ F 50V)
- C11、C12 : Table 1(NIPPON CHEMI-CON)

Table 1

MODEL	C11	C12
DBS400B03	LZX10VB3300MK25	LZX10VB3300MK25
DBS400B05, 07	LZX10VB2200MK20	LZX10VB2200MK20
DBS400B12	LZX25VB1000MK20	LZX25VB1000MK20
DBS400B15, 18	LZX35VB1000MK25	LZX35VB1000MK25
DBS400B24, 28	LZY50VB820MK40	-

Fig 1. Testing circuitry