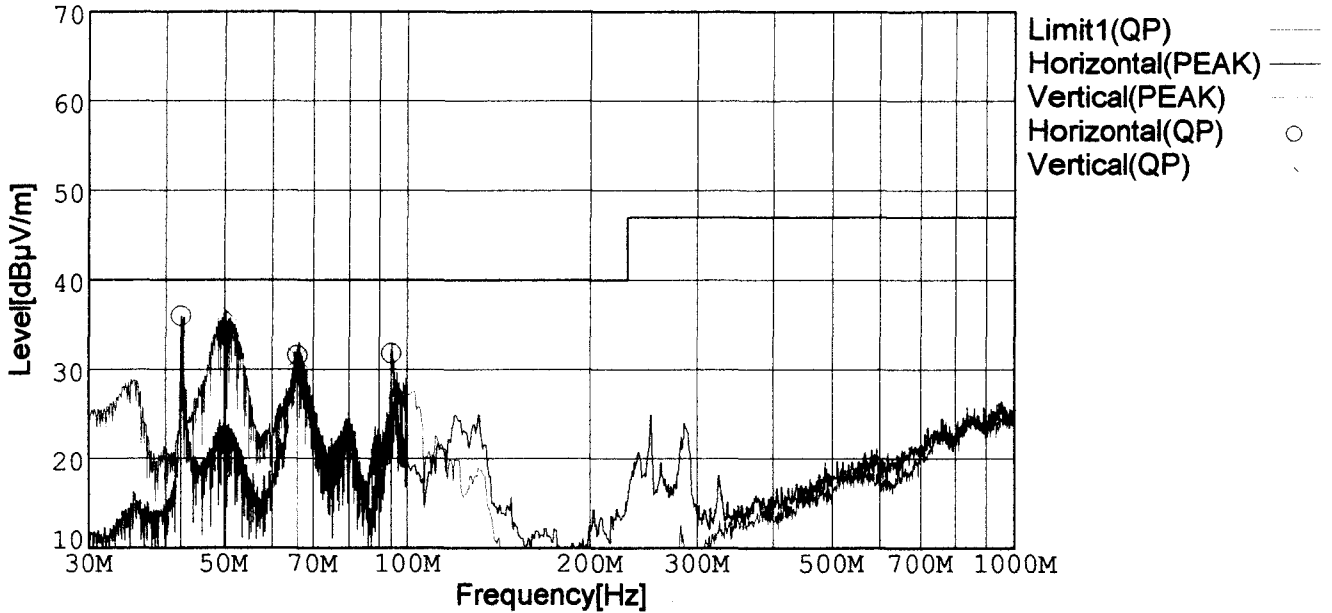


## RADIATED EMISSION

Model Name : DBS200B05  
 Model No. :  
 Serial No. :  
 Temperature : 25deg C  
 Detector : PEAK/QP  
 Points : 4  
 Polarization : Hori. & Vert.  
 Limit1: [EN 55022] Class B<3m>

Humidity : 40%  
 Comment : AC230V Io=100%  
 Tested by : J.HATAGISHI  
 Date : 1999/4/9 22:18  
 EMI Receiver(s) : R3261A,ESPC



Frequency [MHz]	Meter Reading [dBµV]	Antenna Factor[dB]	Cable Loss[dB]	Level [dBµV/m]	Angle[°]	Height [cm]	Pola.	Limit [dBµV/m]	Margin [dB]
42.343	52.3	11.5	-27.9	35.9	284	113	Hori.	40.0	4.1
65.982	50.9	4.8	-24.2	31.5	120	140	Hori.	40.0	8.5
94.098	47.3	9.1	-24.6	31.8	232	131	Hori.	40.0	8.2
50.211	53.0	7.5	-24.0	36.5	110	110	Vert.	40.0	3.5
65.982	49.8	4.8	-23.3	31.3	5	151	Vert.	40.0	8.7

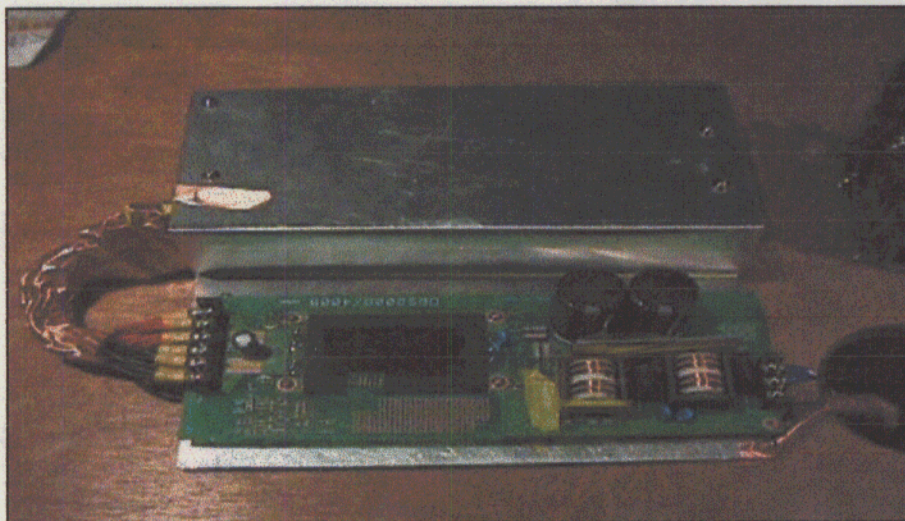
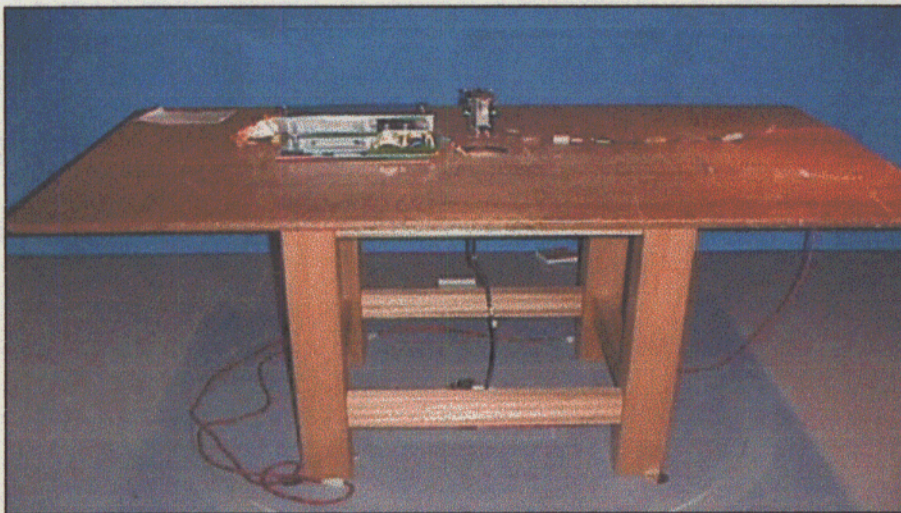


Conditions

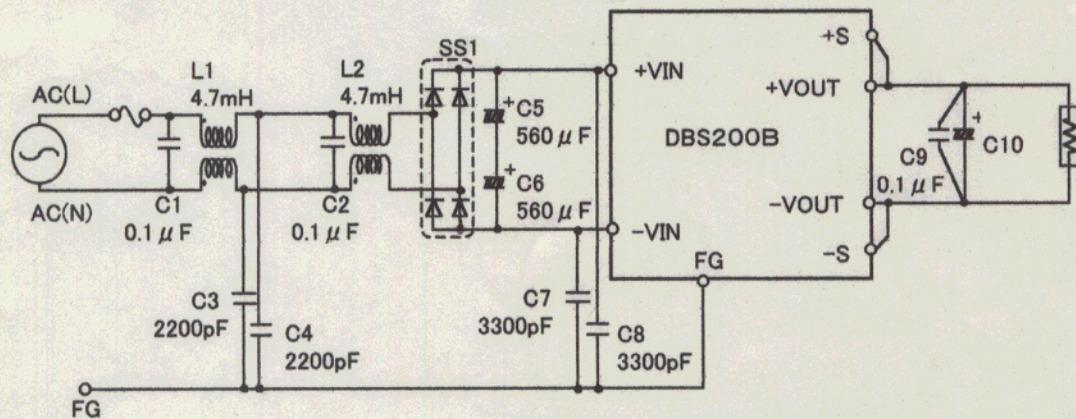
Date 1999/4/9

Test : RADIATED EMISSION  
 Model Name : DBS200B

○Photographs of Test Set-Up



○Testing circuitry



- L1, L2 : SS35H-35047 (TOKIN)
- C5, C6 : 250V 560  $\mu$ F (NICHICON:GQseries)
- C10 : 10V 2200  $\mu$ F(DBS200B03,05,07)  
 25V 1000  $\mu$ F(DBS200B12)
- SS1 : D10XB60 (SINDENGEN)

Fig. Testing circuitry



## LINE CONDUCTION

Model Name : DBS200B05

Humidity : 40%

Model No. :

Comment : AC230V Io=100%

Serial No. :

Tested by : J.HATAGISHI

Temperature : 25deg C

Detector : PEAK/QP/Ave.

Date : 1999/4/9 21:55

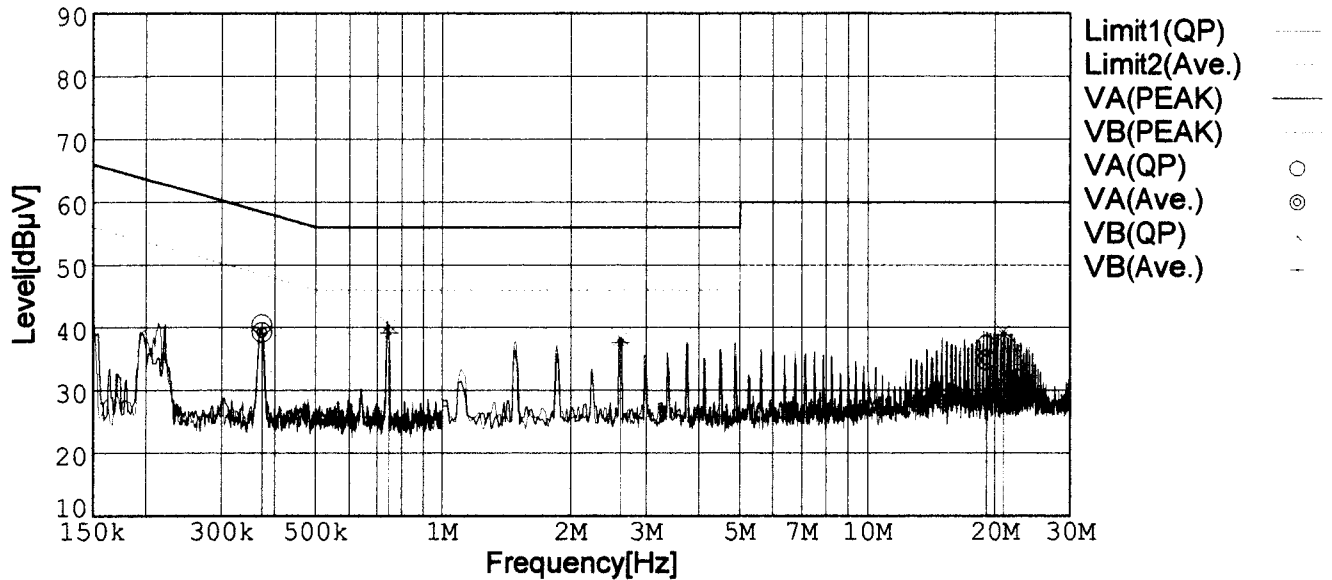
Points : 5

EMI Receiver(s) : R3261A,ESPC

Line Mode : VA/VB

Limit1: [EN 55022] Class B(QP)

Limit2: [EN 55022] Class B(Ave.)



Frequency [MHz]	Meter Reading (QP) [dBµV]	Meter Reading (Ave.) [dBµV]	Factor [dB]	Level (QP) [dBµV]	Level (Ave.) [dBµV]	Line	Limit (QP) [dBµV]	Limit (Ave.) [dBµV]	Margin (QP)[dB]	Margin (Ave.) [dB]
0.3723	30.3	29.0	10.2	40.5	39.2	VA	58.4	48.4	17.9	9.2
19.0617	26.5	24.1	10.7	37.2	34.8	VA	60.0	50.0	22.8	15.2
0.7460	30.2	29.1	10.1	40.3	39.2	VB	56.0	46.0	15.7	6.8
2.6148	28.2	27.6	10.1	38.3	37.7	VB	56.0	46.0	17.7	8.3
20.9194	28.6	28.1	10.8	39.4	38.9	VB	60.0	50.0	20.6	11.1

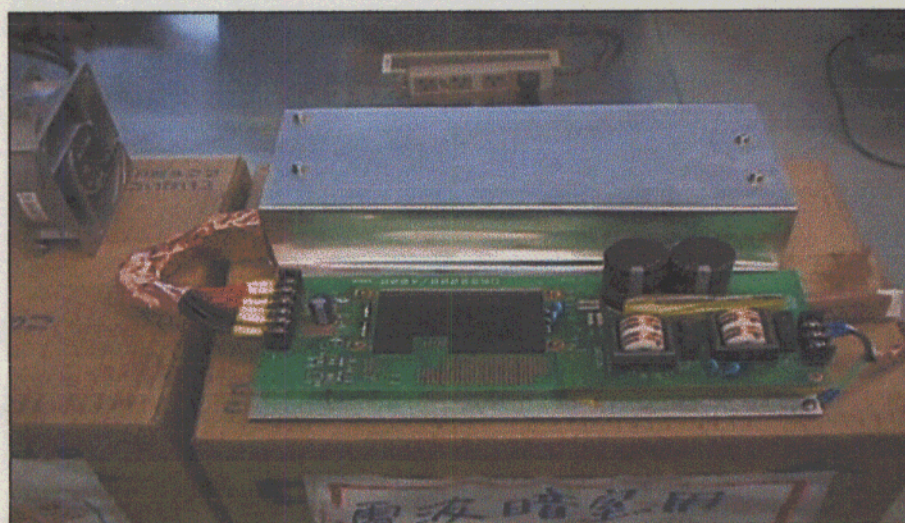


Conditions

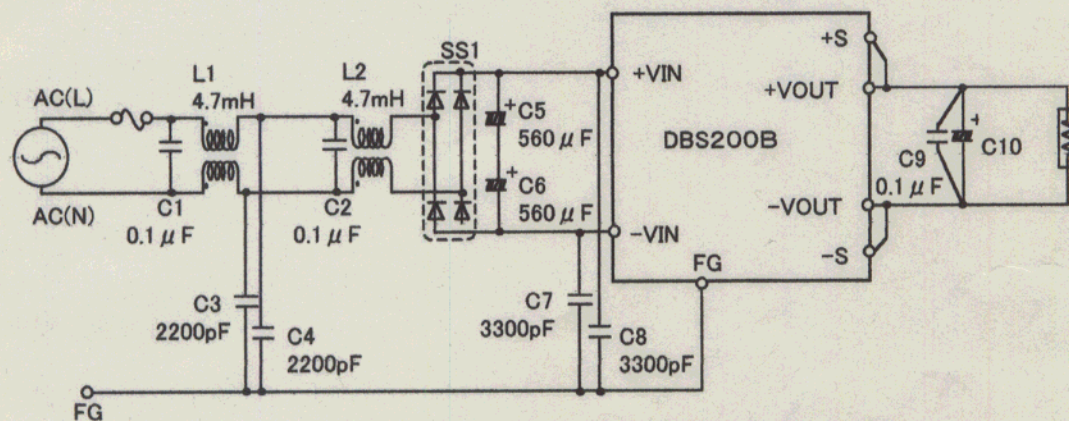
Date 1999/4/9

Test : LINE CONDUCTION  
 Model Name : DBS200B

○Photographs of Test Set-Up



○Testing circuitry



- L1, L2 : SS35H-35047 (TOKIN)
- C5, C6 : 250V 560 μ F (NICHICON:GQseries)
- C10 : 10V 2200 μ F(DBS200B03,05,07)  
25V 1000 μ F(DBS200B12)
- SS1 : D10XB60 (SINDENGEN)

Fig. Testing circuitry