

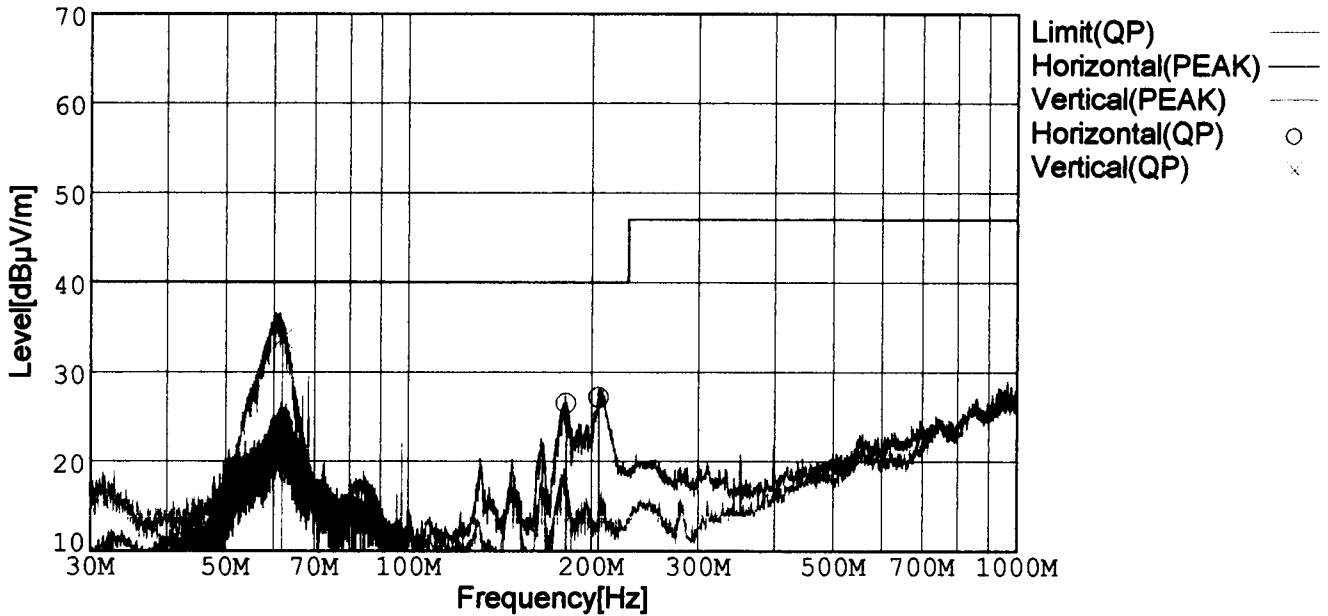


RADIATED EMISSION

Model Name : DBS150A12
 Model No. :
 Serial No. :
 Points : 3
 Detector : PEAK/QP
 Polarization : Hori. & Vert.

Temp. : 25degC
 Humi. : 40%
 Date : 2003/1/24 11:46
 Test Equip. : R3132,ESPC
 Comment : AC90V Io=100%
 Tested by : T.Oiwake

Limit: [EN 55022] Class B<3m>



| Frequency [MHz] | Meter Reading (QP) [dBµV] | Ant. Type | Antenna Factor [dB/m] | Cable & Preamp [dB] | Level (QP) [dBµV/m] | Angle[°] | Height [cm] | Polar. | Limit [dBµV/m] | Margin [dB] |
|-----------------|---------------------------|-----------|-----------------------|---------------------|---------------------|----------|-------------|--------|----------------|-------------|
| 181.859 | 41.7 | BL | 8.2 | -23.4 | 26.5 | 194 | 159 | Hori. | 40.0 | 13.5 |
| 205.828 | 42.1 | BL | 8.4 | -23.3 | 27.2 | 63 | 118 | Hori. | 40.0 | 12.8 |
| 61.972 | 52.2 | BL | 4.4 | -22.9 | 33.7 | 130 | 107 | Vert. | 40.0 | 6.3 |

BL: Biconi-Log

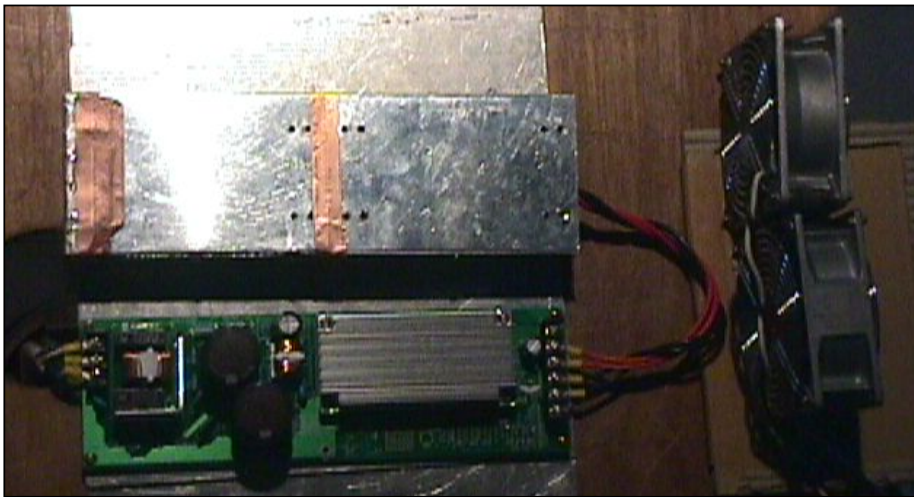
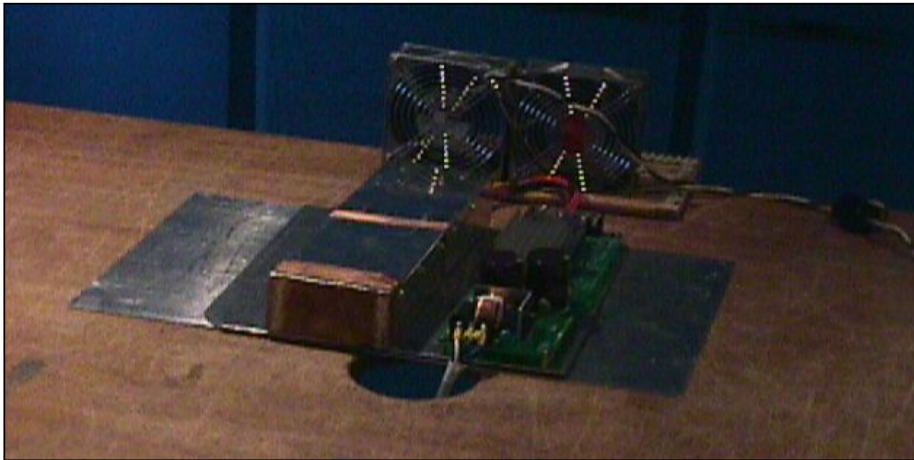
Conditions

Date 2003/01/24

Test : RADIATED EMISSION

Model Name : DBS100A/150A

○Photographs of Test Set-Up



○Testing circuitry

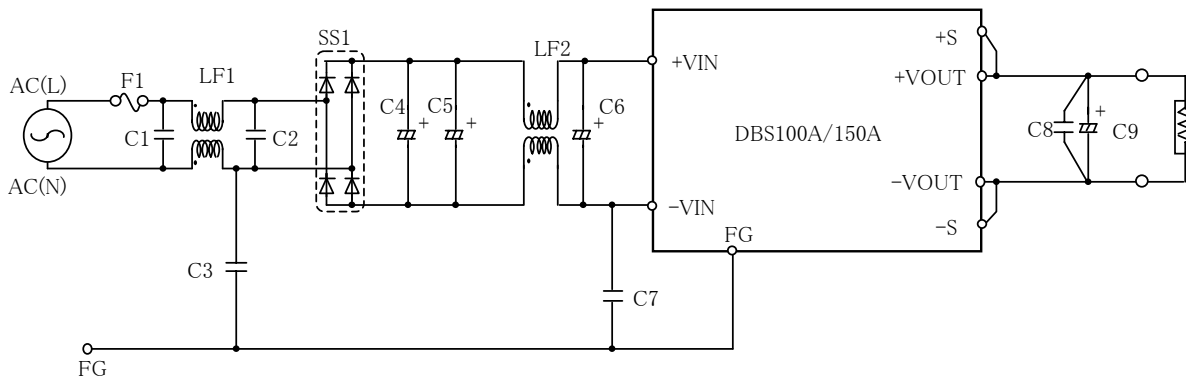


Fig. Testing circuitry

- LF1 : 2.0mH 5.0A Common mode Choke Coil
- LF2 : 1.0mH 5.0A Common mode Choke Coil
- SS1 : 25A 600V Bridge diode
- C1、C2 : 250V 0.47 μ F Film capacitor
- C4、C5 : 250V 1000 μ F Electrolytic capacitor
- C6 : 250V 47 μ F Electrolytic capacitor
- C3、C7 : 250V 3300pF Ceramic capacitor
- C8 : 50V 0.1 μ F Film capacitor
- C9 : 25V 1000 μ F (DBS100A13R8, DBS150A12/15)
35V 470 μ F (DBS150A24)

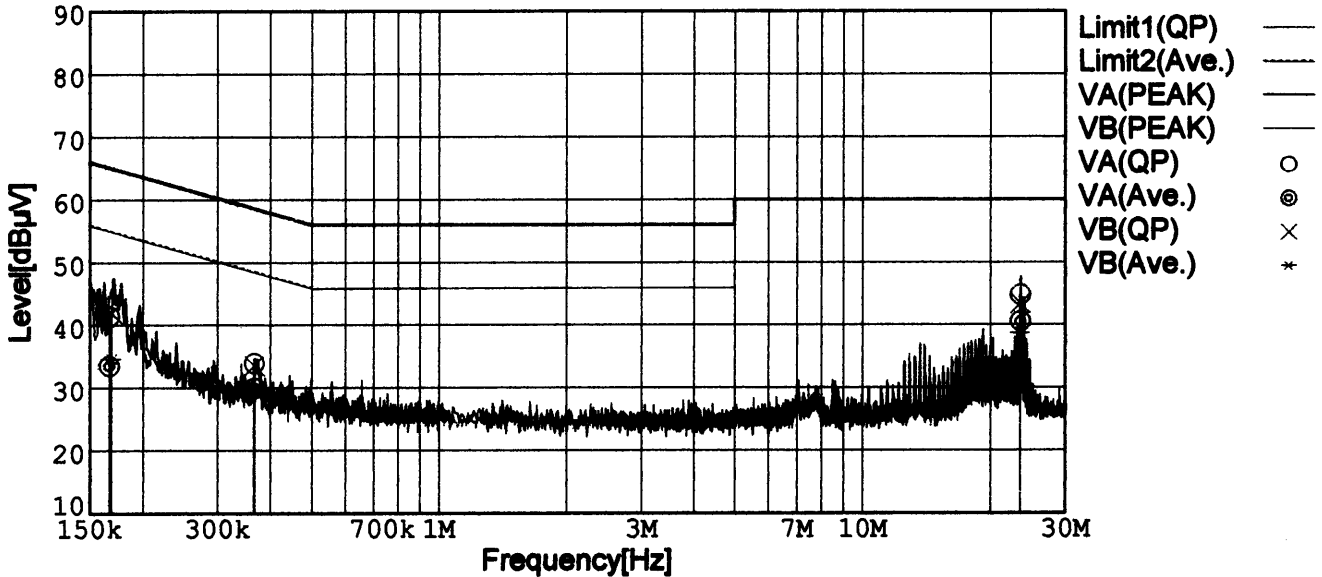


LINE CONDUCTION

Model Name : DBS150A12
 Model No. :
 Serial No. :
 Points : 3
 Detector : PEAK/QP/Ave.
 Line Mode : VA/VB

Temp. : 25degC
 Humi. : 40%
 Date : 2003/1/23 15:22
 Test Equip. : R3132,ESPC
 Comment : AC90V Io=100%
 Tested by : T.Oiwake

Limit1: [EN 55022] Class B(QP)
 Limit2: [EN 55022] Class B(Ave.)



| Frequency [MHz] | Meter Reading (QP) [dBµV] | Meter Reading (Ave.) [dBµV] | Factor [dB] | Level (QP) [dBµV] | Level (Ave.) [dBµV] | Line | Limit (QP) [dBµV] | Limit (Ave.) [dBµV] | Margin (QP)[dB] | Margin (Ave.) [dB] |
|-----------------|---------------------------|-----------------------------|-------------|-------------------|---------------------|------|-------------------|---------------------|-----------------|--------------------|
| 0.1671 | 31.4 | 23.5 | 10.0 | 41.4 | 33.5 | VA | 65.1 | 55.1 | 23.7 | 21.6 |
| 0.3674 | 23.9 | 19.9 | 10.0 | 33.9 | 29.9 | VA | 58.6 | 48.6 | 24.7 | 18.7 |
| 23.5855 | 33.8 | 29.6 | 10.9 | 44.7 | 40.5 | VA | 60.0 | 50.0 | 15.3 | 9.5 |
| 0.1690 | 31.9 | 24.6 | 10.0 | 41.9 | 34.6 | VB | 65.0 | 55.0 | 23.1 | 20.4 |
| 0.3667 | 23.5 | 19.5 | 10.0 | 33.5 | 29.5 | VB | 58.6 | 48.6 | 25.1 | 19.1 |
| 23.5795 | 32.5 | 27.8 | 10.9 | 43.4 | 38.7 | VB | 60.0 | 50.0 | 16.6 | 11.3 |

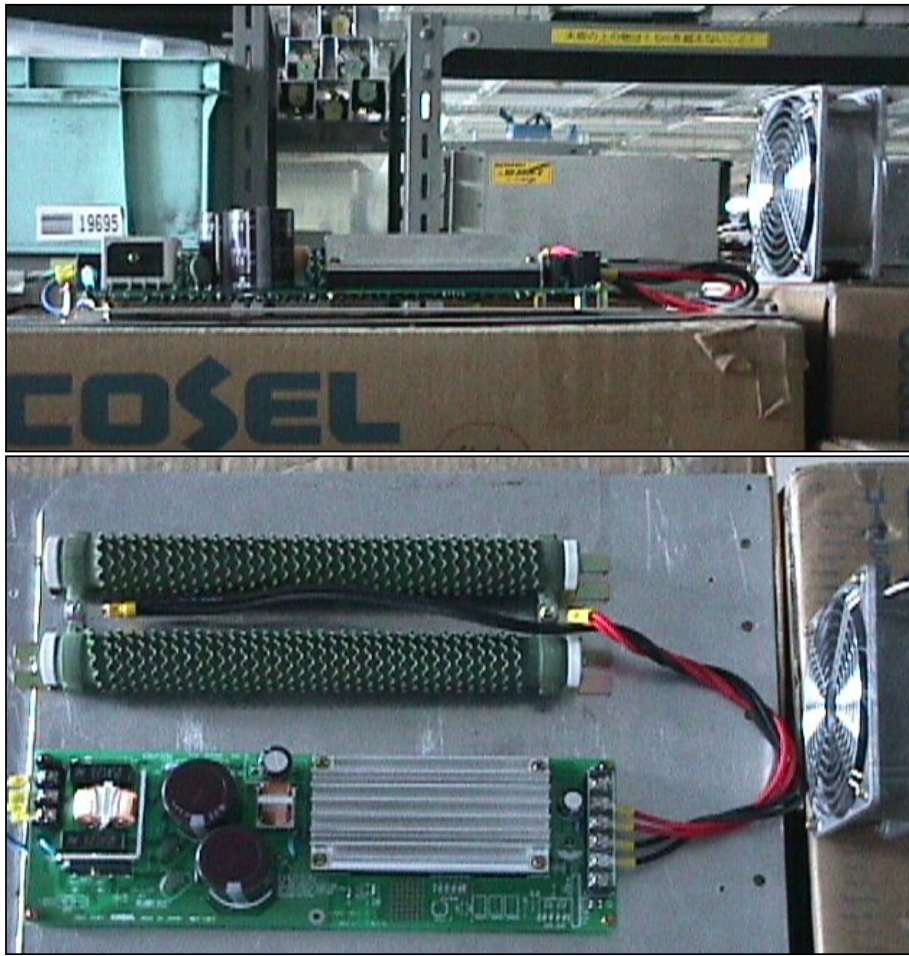
Conditions

Date 2003/01/24

Test : LINE CONDUCTION

Model Name : DBS100A/150A

○Photographs of Test Set-Up



○Testing circuitry

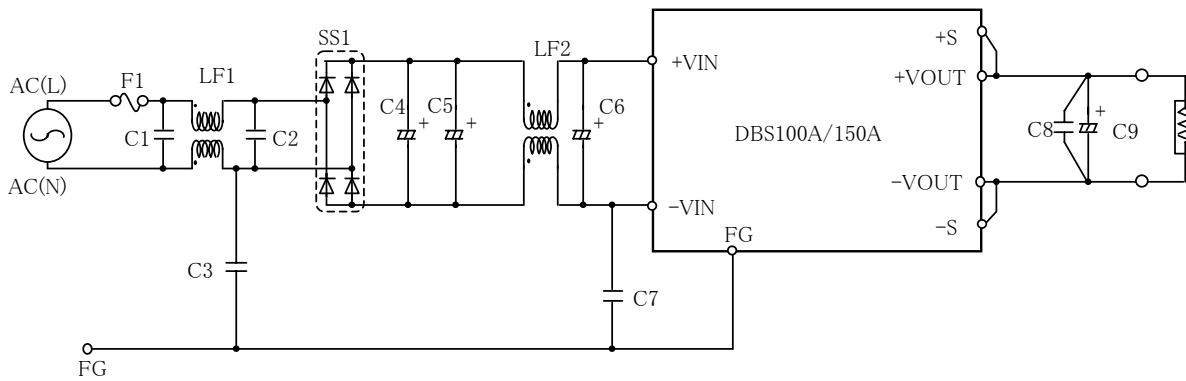


Fig. Testing circuitry

- LF1 : 2.0mH 5.0A Common mode Choke Coil
- LF2 : 1.0mH 5.0A Common mode Choke Coil
- SS1 : 25A 600V Bridge diode
- C1、C2 : 250V 0.47 μ F Film capacitor
- C4、C5 : 250V 1000 μ F Electrolytic capacitor
- C6 : 250V 47 μ F Electrolytic capacitor
- C3、C7 : 250V 3300pF Ceramic capacitor
- C8 : 50V 0.1 μ F Film capacitor
- C9 : 25V 1000 μ F (DBS100A13R8, DBS150A12/15)
35V 470 μ F (DBS150A24)