



CBS450 EMI / EMS Test results

Jul 9, 2007  
OS Design DEPT.

Approved : Tatsuya Mano  
Tatsuya Mano

Prepared : Eiji Nagata  
Eiji Nagata

No.	Test item	Conditions	Conditions of Acceptability	Result
1	Line conduction	(1) Rated input (2) Rated load (3) Ambient temp. 25±10°C (4) Test circuit Fig.1	(1)Meets the undermentioned FCC Part15 classA , VCCI classA CISPR22 classA , EN55022-A	OK
2	Radiated emission	(1) Rated input (2) Rated load (3) Ambient temp. 25±10°C (4) Test circuit Fig.1	(1)Meets the undermentioned FCC Part15 classA , VCCI classA CISPR22 classA , EN55022-A	OK
3	Static electricity immunity test (EN61000-4-2)	(1) Rated input (2) Rated load (3) Ambient temp. 25±10°C (4) Contact discharge voltage 8[kV] (Level 4) (5) Test circuit Fig.1	(1)No protection circuit failure. (2)No output voltage drop with control circuit failure. (3)No any other function failure	OK
4	Radiated, radio-frequency, electromagnetic field immunity test (EN61000-4-3)	(1) Rated input (2) Rated load (3) Ambient temp. 25±10°C (4)Testing field strength 10[V/m] (Level 3) (5) Test circuit Fig.1	(1)No protection circuit failure. (2)No output voltage drop with control circuit failure. (3)No any other function failure	OK
5	Electrical fast transient/ burst immunity test (EN61000-4-4)	(1) Rated input (2) Rated load (3) Ambient temp. 25±10°C (4) Test peak voltage 4[kV] (Level 4) (5) Test circuit Fig.1	(1)No protection circuit failure. (2)No output voltage drop with control circuit failure. (3)No any other function failure	OK
6	Surge immunity test (EN61000-4-5)	(1) Rated input (2) Rated load (3) Ambient temp. 25±10°C (4) Test voltage Line to line 2[kV] (Level 3) Line to earth 4[kV] (Level 4) (5) Test circuit Fig.2	(1)The power supply is not stc (2)Circuit does not malfunction. (3)No abnormality of the insulation destruction etc. (4)Parts are no damaged.	OK

OEMI/EMS testing circuitry

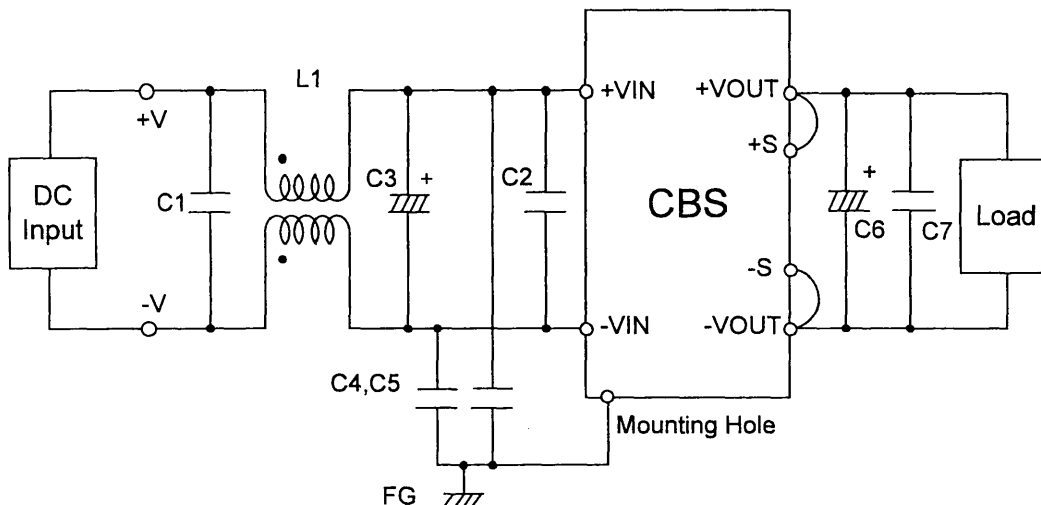


Fig.1 testing circuitry (from No.1 to No.5)

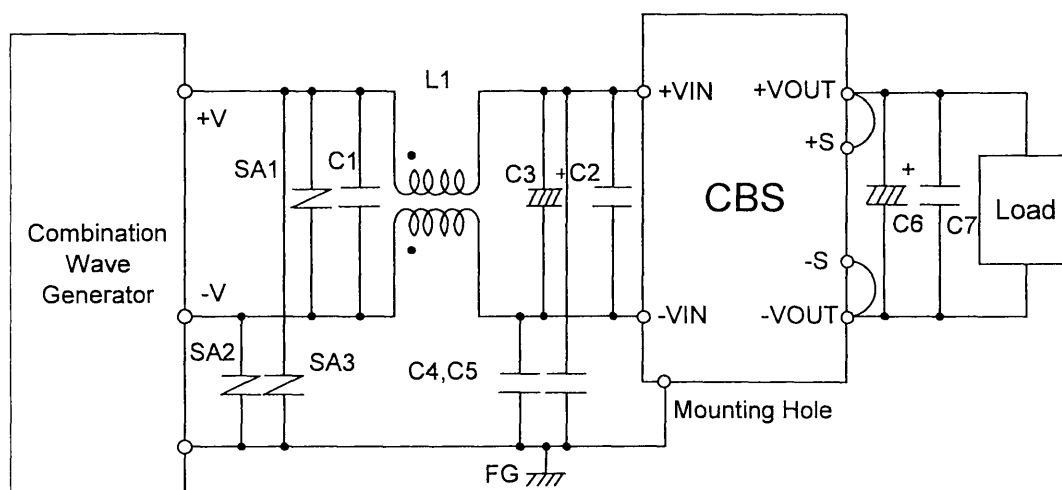


Fig.2 testing circuitry (No.6)

- L1 : 1mH 10A Inductor
- C1,2 : 3.3uF Film capacitor
- C3 : 100V68uF Electric capacitor × 2
- C4,5 : 630V0.068uF Film capacitor
- C6 : 35V220uF Electric capacitor
- C7 : 50V0.1uF Film capacitor
- SA1,2,3 : ERZV10D101

or equivalent.