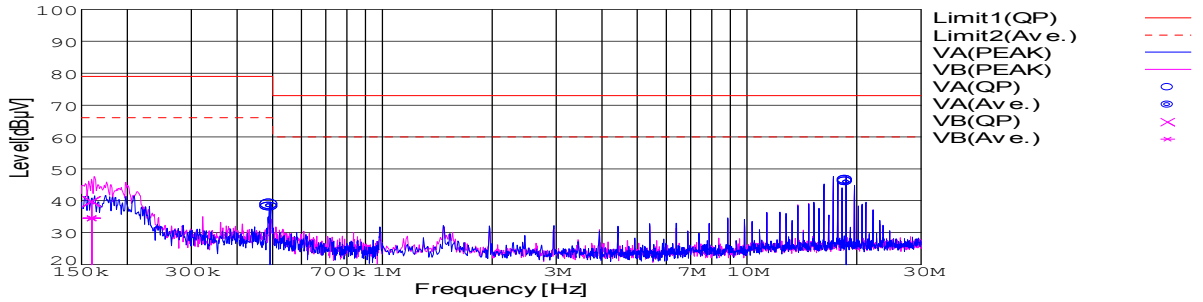


DATA SHEET		Date	04-Oct-07
Model	SFS30481R5	Temp.	25 degreeC
Test	EMI Line conduction & Radiated emission	Humid.	45 %RH
		Tested by	Y.Miyawaki

**LINE CONDUCTION**

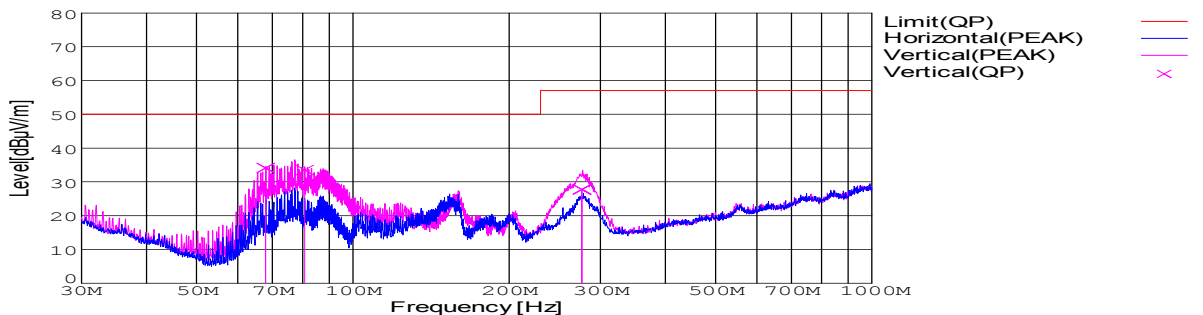
Model Name : SFS30481R5 Temp. : 25degreeC  
 Model No. : Humi. : 45%  
 Serial No. : Date : 2007/10/4 14:02  
 Points : 3 Test Equip. : R3132,ESPC  
 Detector : PEAK/QP/Ave. Load Line : 100mm  
 Line Mode : VA/VB Comment : Vo = 1.5V , Io = 10.4A  
 Power Supply : DC 48V  
 Limit1: [CISPR Pub11] Class A Gr.1(QP)  
 Limit2: [CISPR Pub11] Class A Gr.1(Ave.)



Frequency [MHz]	Meter Reading (Ave.) [dBuV]	Meter Reading (QP) [dBuV]	Factor [dB]	Level(Ave.) [dBuV]	Level(QP) [dBuV]	Line	Limit(Ave.) [dBuV]	Limit(QP) [dBuV]	Margin(Ave.) [dB]	Margin(QP) [dB]
0.4924	28.3	28.9	9.9	38.2	38.8	VA	66	79	27.8	40.2
18.6943	35.8	36.2	10.2	46	46.4	VA	60	73	14	26.6
0.1597	24.7	29.9	9.8	34.5	39.7	VB	66	79	31.5	39.3

**RADIATED EMISSION**

Model Name : SFS30481R5 Temp. : 25degreeC  
 Model No. : Humi. : 45%  
 Serial No. : Date : 2007/10/4 14:16  
 Points : 3 Test Equip. : R3132,ESPC  
 Detector : PEAK/QP Polarization : Vertical Load Line : 100mm  
 Power Supply : DC 48V Comment : Vo = 1.5V , Io = 10.4A  
 Limit: [CISPR 11] Class A Group 1<3m>



Frequency [MHz]	MeterReading (QP) [dBuV]	Ant. Type	Antenna Factor [dB/m]	Cable & Preamp [dB]	Level(QP) [dBuV/m]	Angle [°]	Height [cm]	Polar.	Limit [dBuV/m]	Margin [dB]
80.747	58.3	BL	7.1	-31.9	33.5	156	130	Vert.	50	16.5
67.951	60.9	BL	5.2	-32	34.1	322	108	Vert.	50	15.9
276.273	46.4	BL	12.4	-31	27.8	203	112	Vert.	57	29.2

DATA SHEET		Date	04-Oct-07
Model	SFS30481R5	Temp.	25 degreeC
Test	EMI Line conduction & Radiated emission	Humid.	45 %RH
		Tested by	Y.Miyawaki

## 1. Conditions

### (1) Photograph of Test Set-Up

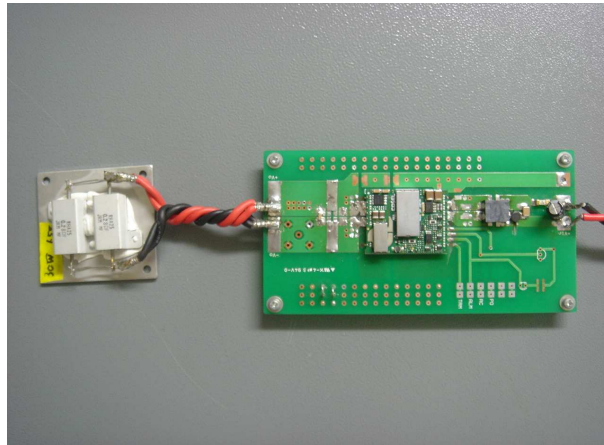
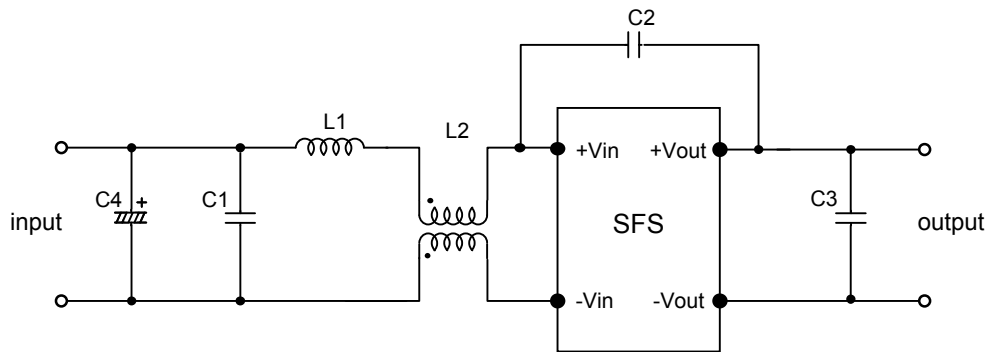


Fig1. Photograph of Test Set-Up

### (2) Testing circuitry



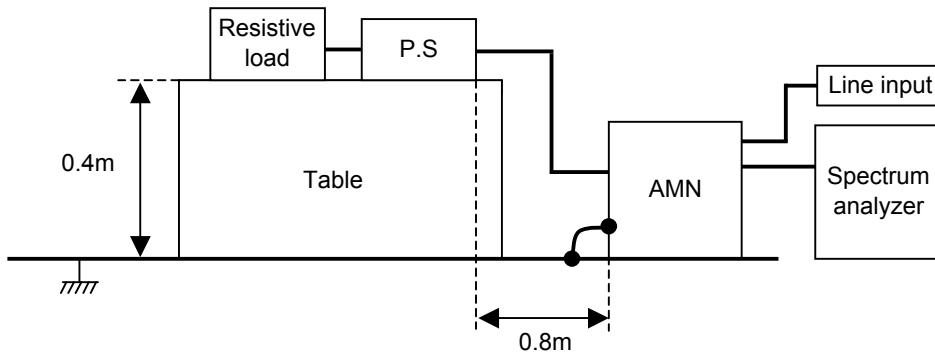
C1: 1 $\mu$ F 100V Ceramic capacitor  
 C2: 2200pF 630V Ceramic capacitor  
 C3: 22 $\mu$ F 16V Ceramic capacitor  
 C4: 22 $\mu$ F 100V Electric capacitor

L1: 1 $\mu$ H 2.4A Inductor  
 L2: ACM1211-102-2PL : TDK

Fig2. Testing circuitry

DATA SHEET		Date	04-Oct-07
Model	Circuit used for measurement	Temp.	25 degreeC
Test	EMI Line conduction & Radiated emission	Humid.	45 %RH
		Tested by	Y.Miyawaki

## 1. Line conduction



## 2. Radiated emission

