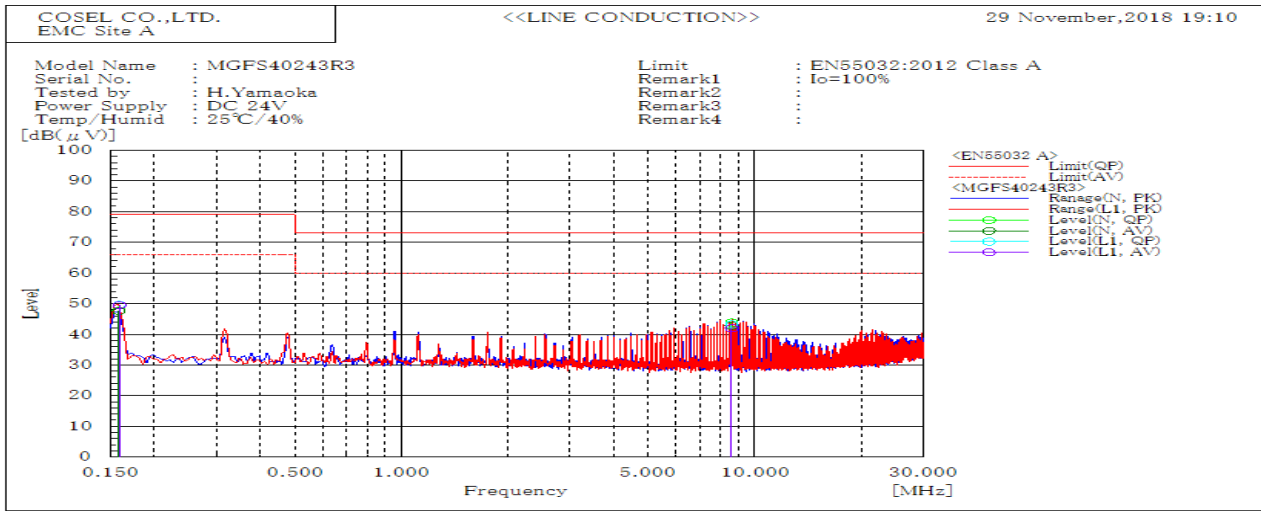
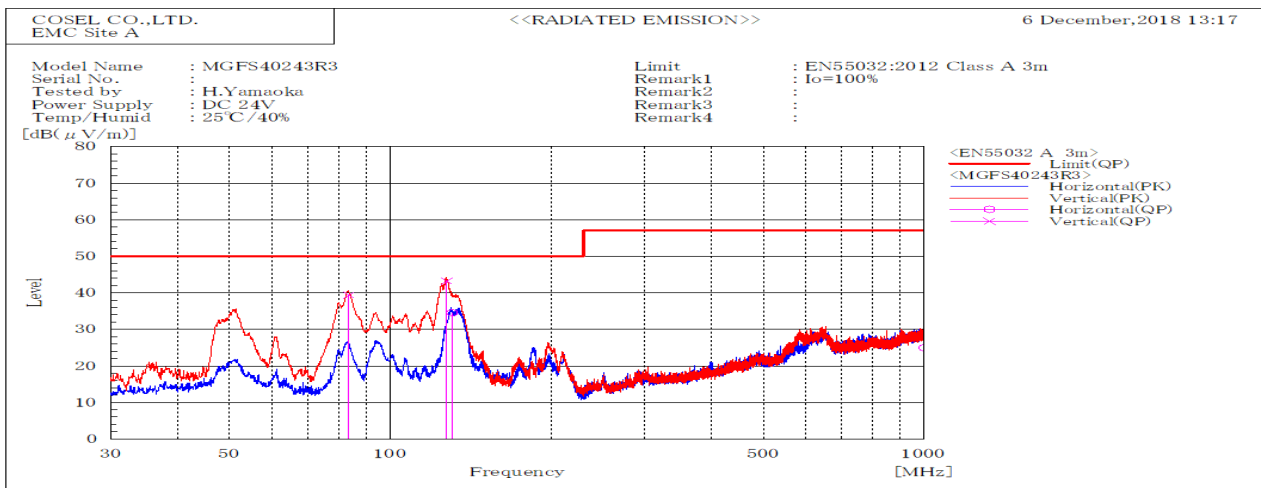


| DATA SHEET | | Date | 15-Jan-19 |
|------------|--|-----------|------------|
| Model | MGFS40243R3 | Temp. | 25 degreeC |
| Test | EMI Line conduction & Radiated emission | Humid. | 40 %RH |
| | | Tested by | H.Yamaoka |



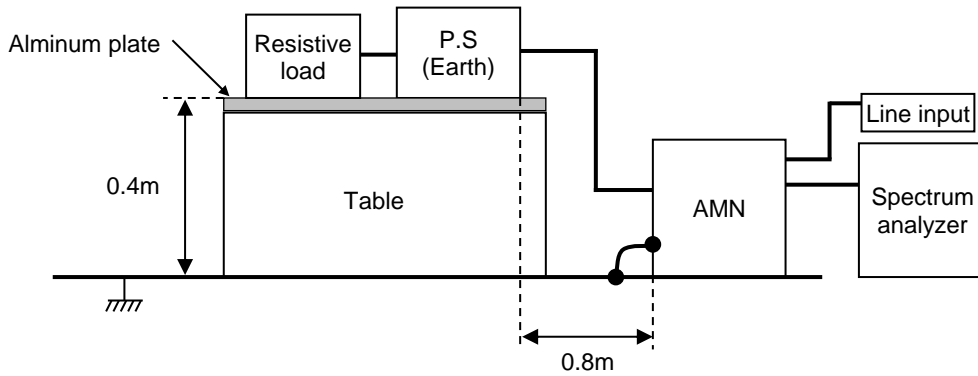
| Frequency MHz | Line | Level dB(μV) | | Limit dB(μV) | | Margin dB | | Pass/Fail | Remark |
|------------------|------|-----------------|------|-----------------|----|--------------|------|-----------|--------|
| | | QP | AV | QP | AV | QP | AV | | |
| 0.159 | L1 | 49.6 | 49.5 | 79 | 66 | 29.4 | 16.5 | Pass | |
| 8.606 | L1 | 43.3 | 42.1 | 73 | 60 | 29.7 | 17.9 | Pass | |
| 0.159 | N | 47.7 | 47.5 | 79 | 66 | 31.3 | 18.5 | Pass | |
| 8.6 | N | 43.8 | 42.8 | 73 | 60 | 29.2 | 17.2 | Pass | |



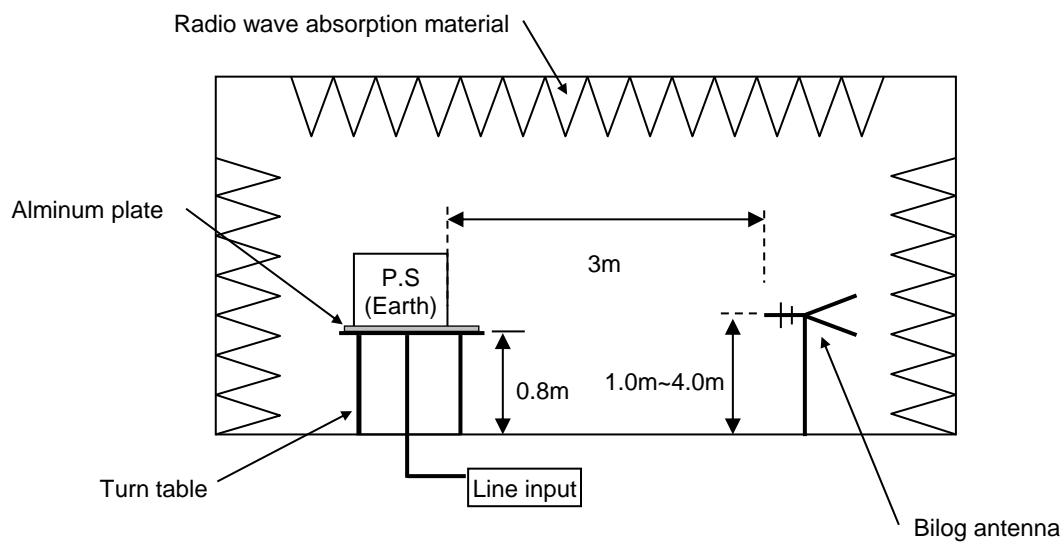
| Frequency MHz | Polarization | Stability | Level dB(μV/m) | | Limit dB(μV/m) | Margin dB | Pass/Fail | Height cm | Angle deg | Remark |
|------------------|--------------|-----------|-------------------|----|-------------------|--------------|-----------|--------------|--------------|--------|
| | | | QP | QP | | | | | | |
| 127.603 | V | Stable | 43.3 | 50 | 6.7 | Pass | 101.3 | 358 | | |
| 83.508 | V | Stable | 39.4 | 50 | 10.6 | Pass | 101.4 | 104.7 | | |
| 130.603 | H | Stable | 34.6 | 50 | 15.4 | Pass | 203.2 | 174.1 | | |
| 999.998 | H | Stable | 25 | 57 | 32 | Pass | 271.8 | 346.4 | | |

| DATA SHEET | | Date | 15-Jan-19 |
|------------|--|-----------|------------|
| Model | Circuit used for measurement | Temp. | 25 degreeC |
| Test | EMI Line conduction & Radiated emission | Humid. | 40 %RH |
| | | Tested by | H.Yamaoka |

1. Line conduction



2. Radiated emission

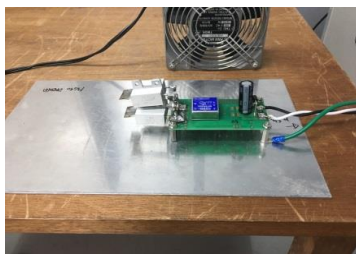


Conditions

Test : EMI

Model Name: MGFS40□□

○Photographs of Test Set-Up
LINE CONDUCTION



RADIATED EMISSION



○Testing circuitry

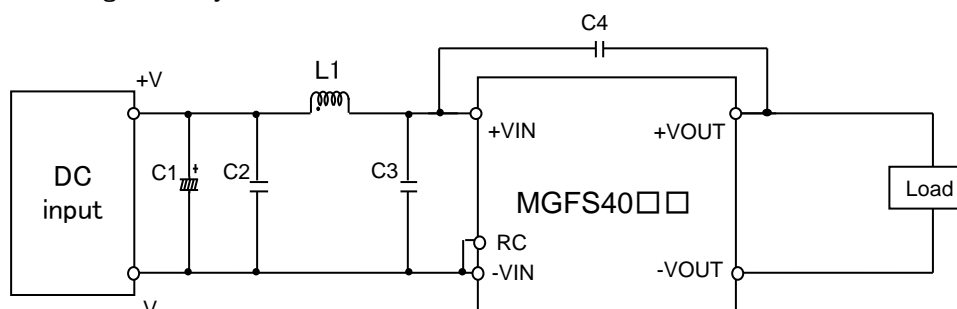


Fig.1 Testing circuitry

- | | | |
|------|------------|---|
| C1 : | MGFS4005□□ | 10V 4700μ F Electrolytic capacitor (UHWseries NICHICON CORPORATION) |
| | MGFS4024□□ | 63V 220μ F Electrolytic capacitor (KYseries NIPPON CHEMI-CON) |
| | MGFS4048□□ | 100V 220μ F Electrolytic capacitor (KYseries NIPPON CHEMI-CON) |
| C2 : | MGFS4005□□ | 16V 22μ F Ceramic capacitor (GRM32ER71C226K MURATA MANUFACTURING) |
| | MGFS4024□□ | 50V 10μ F Ceramic capacitor (GRM32ER71H106K MURATA MANUFACTURING) |
| | MGFS4048□□ | 100V 4.7μ F Ceramic capacitor (HMK325AC7475K TAIYOU YUDEN) |
| C3 : | MGFS4005□□ | 16V 22μ F Ceramic capacitor (GRM32ER71C226K MURATA MANUFACTURING) |
| | MGFS4024□□ | 50V 10μ F Ceramic capacitor (GRM32ER71H106K MURATA MANUFACTURING) |
| | MGFS4048□□ | 100V 4.7μ F Ceramic capacitor (HMK325AC7475K TAIYOU YUDEN) |
| C4 : | MGFS4005□□ | 2kV 1000pF Ceramic capacitor (GR431BR7LA102K MURATA MANUFACTURING) |
| | MGFS4024□□ | 2kV 1000pF Ceramic capacitor (GR431BR7LA102K MURATA MANUFACTURING) |
| | MGFS4048□□ | 2kV 1000pF Ceramic capacitor (GR431BR7LA102K MURATA MANUFACTURING) |
| L1 : | MGFS4005□□ | 15.0A 1.0μ H Inductor (SRP7050TA-1R0M BOURNS) |
| | MGFS4024□□ | 12.0A 1.8μ H Inductor (SRP7050TA-1R8M BOURNS) |
| | MGFS4048□□ | 6.0A 5.6μ H Inductor (SRP7050TA-5R6M BOURNS) |