

TEST DATA OF SNR-10-□□□

Noise Filter

Oct. 17. 2007

Approved by : Toshio Watanabe
Toshio Watanabe Design Manager

Prepared by : Tadayuki Noda
Tadayuki Noda Design Engineer

COSEL CO.,LTD.

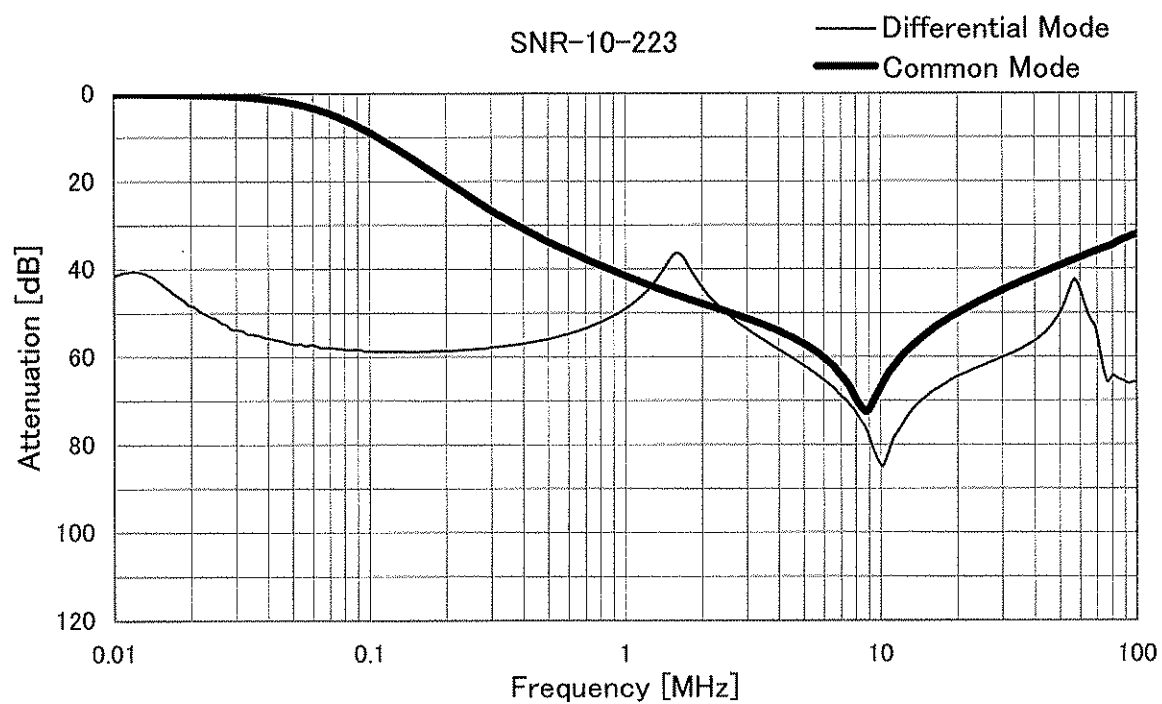
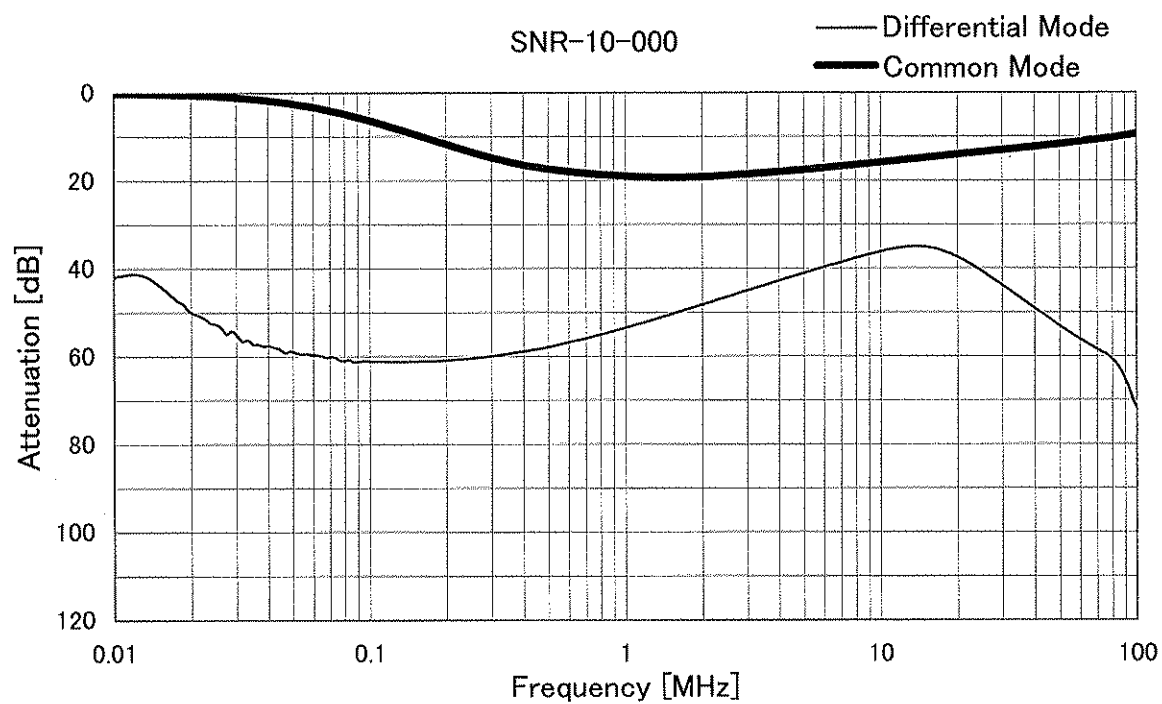


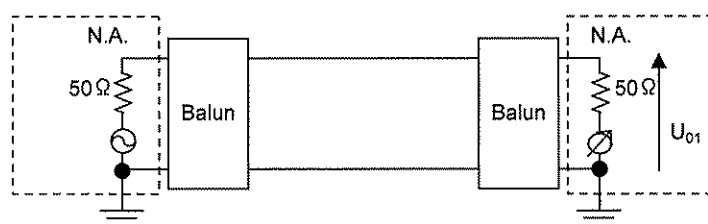
CONTENTS

1. Attenuation Characteristics	1
2. Figure of Testing Circuitry	2
(Final Page 2)	

COSEL

Model	SNR-10-□□□	Temperature 25°C Testing Circuitry Figure A
Item	Attenuation Characteristics	
Object	_____	





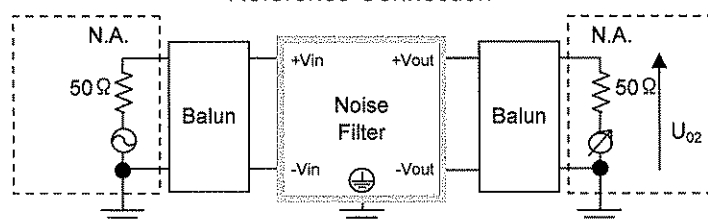
$$\text{Attenuation} = 20\log(U_{01}/U_{02}) \text{ [dB]}$$

U_{01} : Voltage in state without filters

U_{02} : Voltage in state which added filters

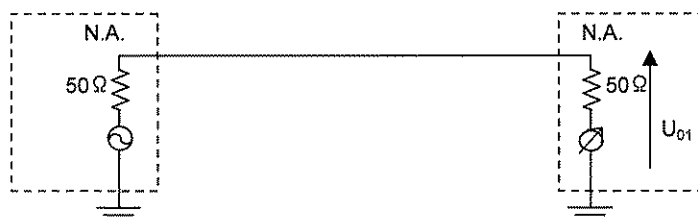
N.A. : Network Analyzer

Reference Connection



Test Connection

Figure A - 1 Differential mode attenuation measurement



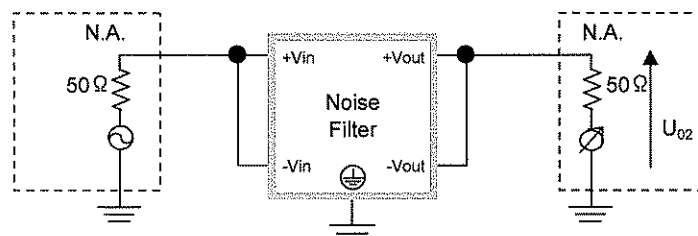
$$\text{Attenuation} = 20\log(U_{01}/U_{02}) \text{ [dB]}$$

U_{01} : Voltage in state without filters

U_{02} : Voltage in state which added filters

N.A. : Network Analyzer

Reference Connection



Test Connection

Figure A - 2 Common mode attenuation measurement