

PCB Mount AC-DC Converter-Small Size
3, 5, 10, 15, and 25W 5 Models



TUHS series		TUHS3	TUHS5	TUHS10	TUHS15	TUHS25
Model						
Input Voltage		AC85-264V 50/60Hz DC120-370V				
Output Voltage	5V	0.6A	1A	2A	—	5A
	12V	0.25A	0.45A	0.9A	1.25A	2.1A
Current	24V	0.13A	0.22A	0.45A	0.63A	1.1A
Operation Temperature		-40°C - +85°C (Output derating is required)				
Withstand Voltage	Input-Output	AC3,000V 1minute, Cutoff current=10mA				
Isolation Resistance	Input-Output	DC500V 50MΩ min (at Room Temperature)				
Agency Approvals		UL60950-1, C-UL, EN60950-1				
Conducted Noise	(Connecting with the recommended circuit)	FCC-B, VCCI-B, CISPR22-B, EN55011-B, EN55022-B				
Case Size (W×H×D) mm (Excluding external components)		28.7×12.7×17.5 [1.13×0.50×0.69 inches]	28.7×12.7×17.5 [1.13×0.50×0.69 inches]	33×15×22 [1.30×0.59×0.87 inches]	33×15×22 [1.30×0.59×0.87 inches]	36×16.5×25.4 [1.42×0.65×1.00 inches]

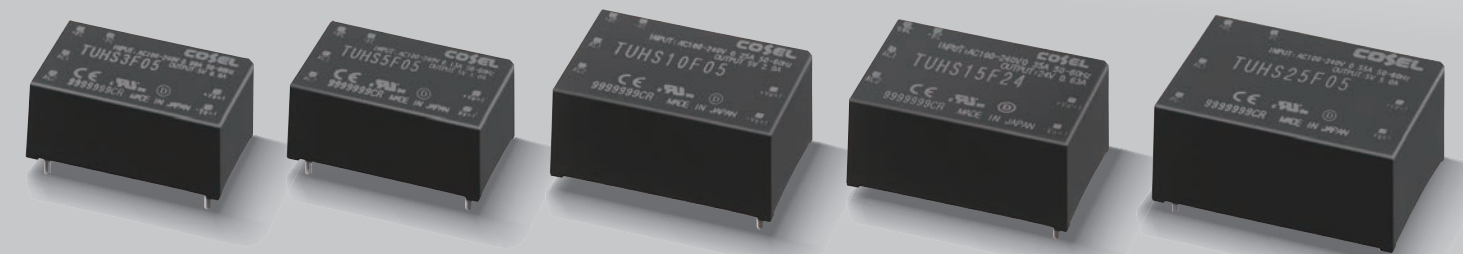
Application manual is available at our web site. Recommended external components are also introduced for your reference.
(URL: www.cosel.co.jp/en/data/sub01-3.html)

New Solution for Design Flexibility

Industry's Smallest High-Efficiency Converter
ErP-compliant

■ Cosel Products Lineup

<p>50W,100W,300W,500W,700W</p> <p>TUNS series AC-DC Power Module with PFC</p>	<p>500W,750W</p> <p>DPG series PFC Power Module</p>	<p>50W,100W,250W</p> <p>DHS series High-voltage Input DC-DC Power Module</p>
---	---	--



3/5/10/15/25W

NEW

TUHS series

■ Head Office COSEL CO., LTD.

1-6-43 Kamiakae-machi, Toyama 930-0816, Japan [Phone](tel:+81-76-432-8152) +81-76-432-8152 [E-mail](mailto:sales@cosel.co.jp) sales@cosel.co.jp [U R L](http://www.cosel.co.jp/en) <http://www.cosel.co.jp/en>

■ Worldwide Sales/Support Network

{ AMERICA }

COSEL U.S.A., INC.

[Phone](tel:+1-800-888-3526) (Free) +1-800-888-3526

[E-mail](mailto:sales@coselusa.com) sales@coselusa.com

[U R L](http://www.coselusa.com) <http://www.coselusa.com>

《Engineering and Technical Support》

[Phone](tel:+1-866-921-0968) (Free) +1-866-921-0968

[E-mail](mailto:techsupport@coselusa.com) techsupport@coselusa.com

{ EUROPE }

COSEL EUROPE GmbH

[Phone](tel:+49-69-95-00-79-0) +49-69-95 00 79-0

[E-mail](mailto:sales@coseseurope.eu) sales@coseseurope.eu

[U R L](http://www.coseseurope.eu) <http://www.coseseurope.eu>

《Engineering and Technical Support》

[E-mail](mailto:techsupport@coseseurope.eu) techsupport@coseseurope.eu

{ ASIA }

COSEL ASIA LTD.

[Phone](tel:+852-2305-2712) +852-2305-2712

[E-mail](mailto:sales@coselasia.com) sales@coselasia.com

[U R L](http://www.coselasia.com) <http://www.coselasia.com>

COSEL (SHANGHAI) ELECTRONICS CO., LTD.

[Phone](tel:+86-21-6440-0381) +86-21-6440-0381

[E-mail](mailto:sales@coselasia.com) sales@coselasia.com

[U R L](http://www.coselasia.com) <http://www.coselasia.com>

TUHS

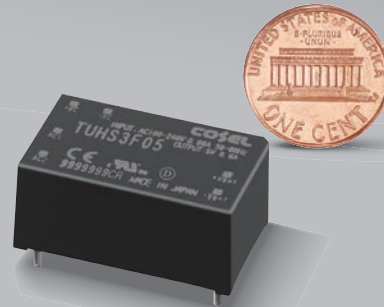
series

Ultra Small AC-DC Converter

TUHS 3

[Input Voltage]
AC85V~264V
[Output Current]
5V (0.6A), 12V (0.25A), 24V (0.13A)

[Size] 28.7×12.7×17.5mm(W×H×D)

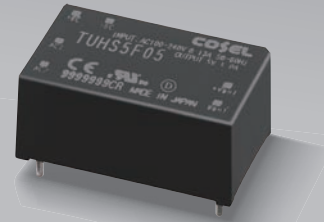


Actual Size

TUHS 5

[Input Voltage]
AC85V~264V
[Output Current]
5V (1.0A), 12V (0.45A), 24V (0.22A)

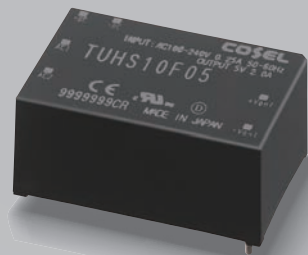
[Size] 28.7×12.7×17.5mm(W×H×D)



TUHS 10

[Input Voltage]
AC85V~264V
[Output Current]
5V (2.0A), 12V (0.9A), 24V (0.45A)

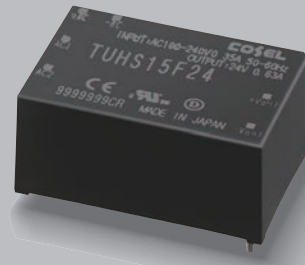
[Size] 33×15×22mm(W×H×D)



TUHS 15

[Input Voltage]
AC85V~264V
[Output Current]
12V (1.25A), 24V (0.63A)

[Size] 33×15×22mm(W×H×D)



High Efficiency

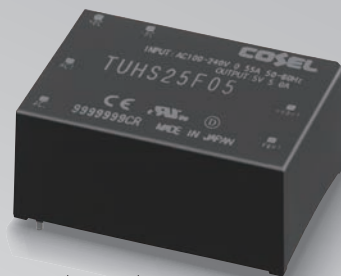
90%

TUHS25F24
AC200V I_o=100%

TUHS 25

[Input Voltage]
AC85V~264V
[Output Current]
5V (5.0A), 12V (2.1A), 24V (1.1A)

[Size] 36×16.5×25.4mm(W×H×D)



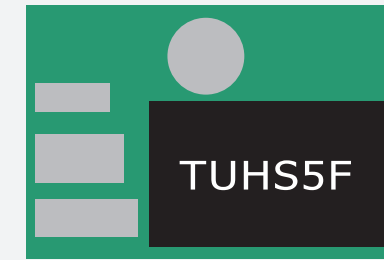
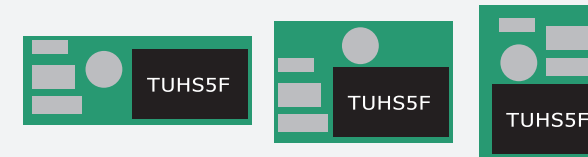
[Features]

- ▷ Meets Class II
- ▷ High Efficiency (90% *TUHS25F24)
- ▷ ErP-compliant
- ▷ Wide Operating Temperature Range :
-40°C~+85°C (Derating required)
- ▷ 5-Year Warranty

Ultra Small

Small Size Enhances Layout Flexibility

Flexible layout of
components that best suits your PCB.



About
**40%
down!**

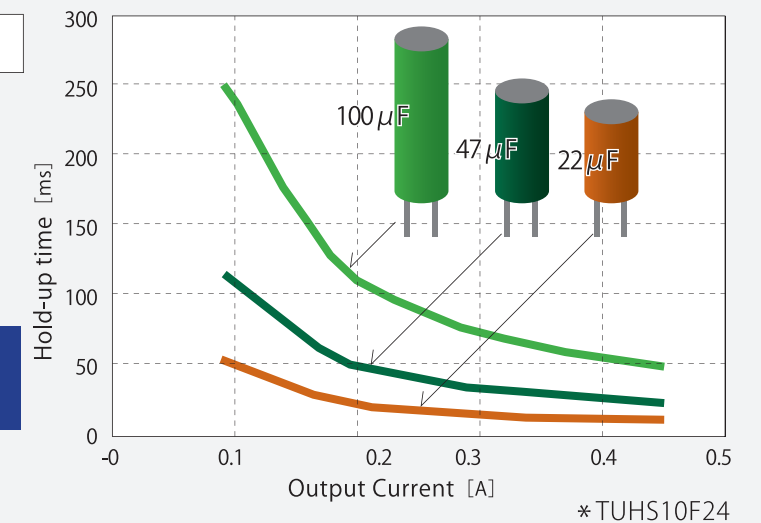


* In case using recommended components

Design Flexibility

Design Flexibility for Hold-Up Time and Expected Life

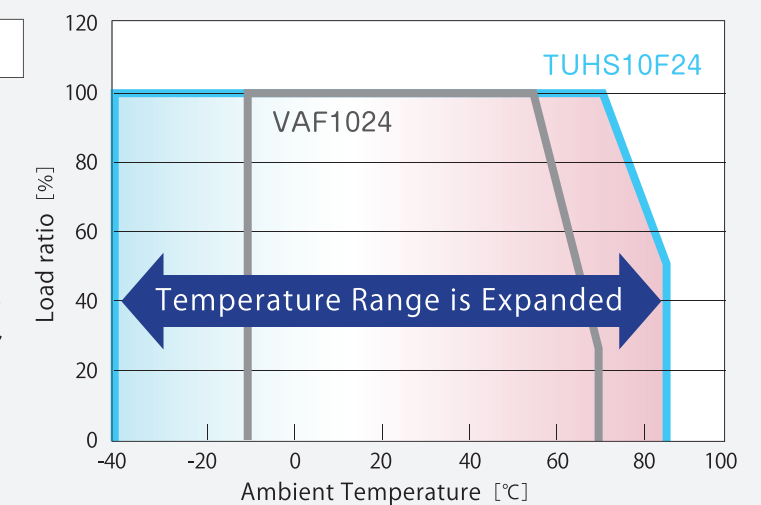
Hold-up time can be set by
choosing capacitors



High Efficiency

Wider Operating Temperature Range

-40~+85°C



Comparing with Previous Products