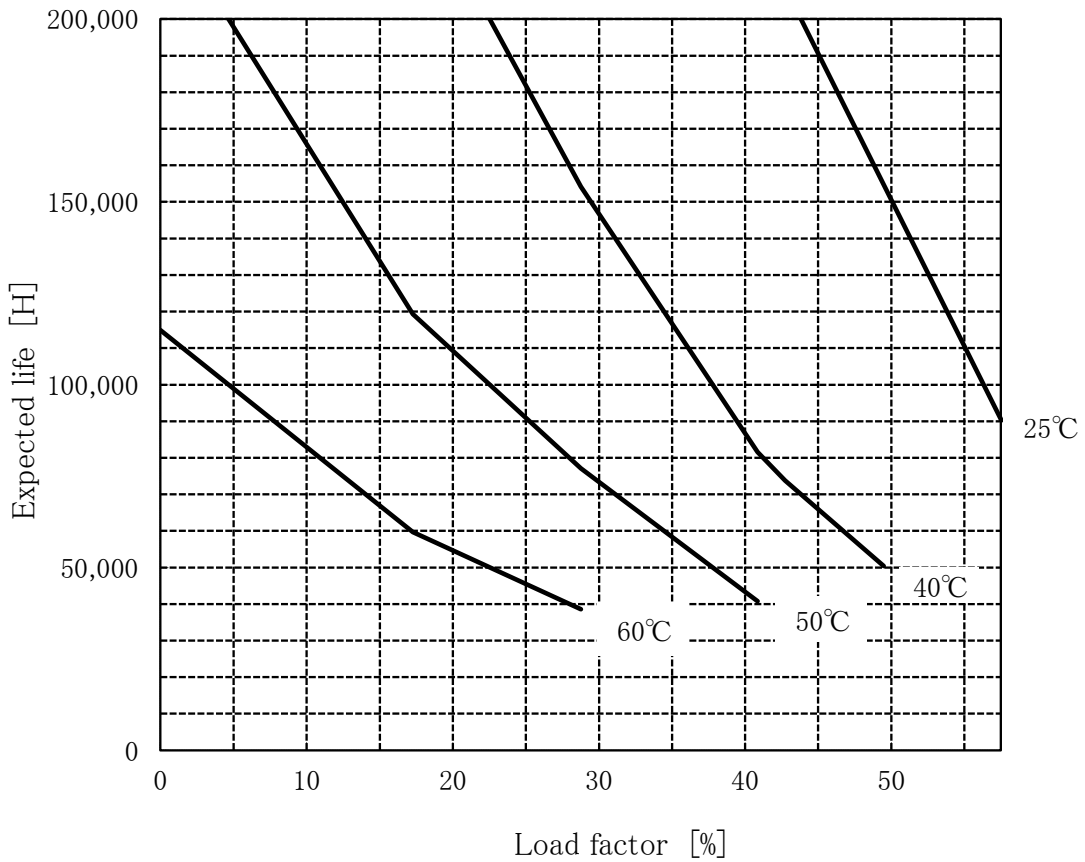


GHA700F-48-J1 Expected Life : 推定寿命



- Above expected life time is calculated according our calculation standard.
上記推定寿命は、当社算出基準に従い算出したものです。
- Over the area of 150,000 hours, the degradation of sealing rubber, etc., is not included in the calculation.
10万時間以上の領域では、封ロゴムの劣化等の影響は、計算式には含まれていません。

Conditions

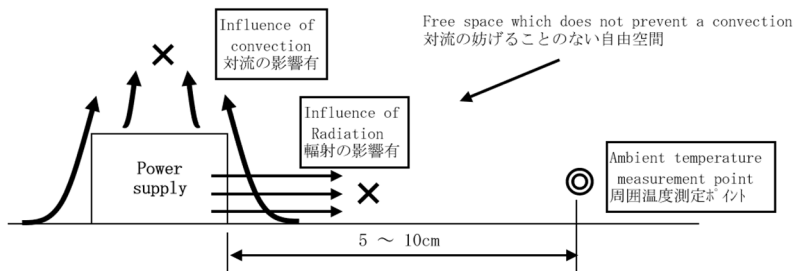
(1)Input voltage AC85~264V 60Hz

(2)Output voltage/
current

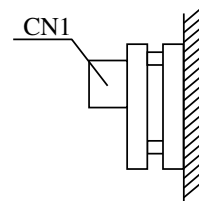
DC OUTPUT	Load factor			
	58%	43%	29%	14%
48V	8.4A	6.25A	4.2A	2.1A

(3)Cooling method Convection

(4)Mounting method Refer below



With the ambient temperature of graph, it measures in the environment of a figure.
グラフの周囲温度とは、図の環境で測定したものです。



Mounting method (C)